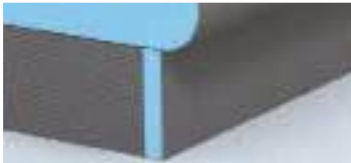


**NEW** Sanoasa Comoda *linea* | wellness bench, slope to front



Carrier element with straight finish length

Description	Length	Order no.
Sanoasa Comoda, bench element, slope to front	1000 mm	07-64-47/015
Sanoasa Comoda, bench element, slope to front	2000 mm	07-64-38/000
Sanoasa Comoda <i>linea</i> , carrier element, straight finish length	1000 mm	07-64-37/000

**Options**

Bench element with integrated electrical heating set	2000 mm	—
Bench element with integrated hot water heating set	2000 mm	—

- The bench element is supplied in two parts, a back rest and a seat.
- These pieces shall be glued with wedi 610 sealant (Page 60), as must the bench element with the carrier element.
- Each bench element requires two carrier elements.
- For hot water or electrical heating sets which are to be installed on site, the delivery time is approx. 4–5 weeks.

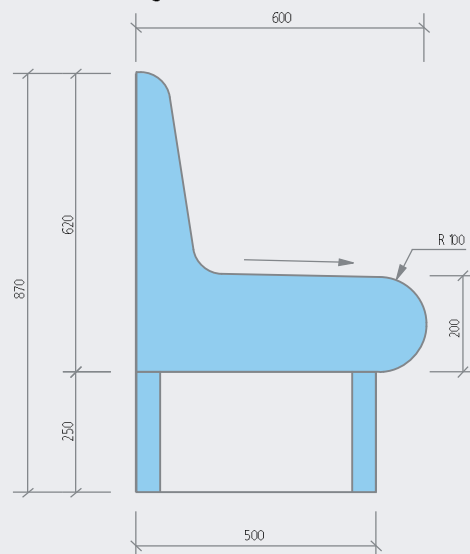
**m² Bench element (for 2000 mm length):**

- Front: approx. 2.30 m²
- Rear panel: approx. 1.24 m²
- Sides: approx. 0.31 m²

**Carrier elements (for 2000 mm length):**

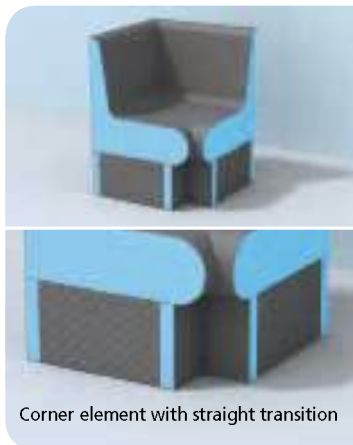
- Front: approx. 0.50 m²
- Rear panel: approx. 0.50 m²
- Sides: approx. 0.25 m²

**Technical drawings**



## Sanoasa Comoda wellness benches

### Sanoasa *Comoda linea* | corner element 90°, straight, slope to front



#### Description

Sanoasa Comoda, bench element 90°, straight, slope to front

Sanoasa Comoda *linea*, carrier corner element 90°

Length x width x height

Order no.

650 x 650 x 620 mm

07-64-47/004

650 x 650 x 250 mm

07-64-47/005



- The bench element shall be glued to the carrier element using wedi 610, adhesive sealant (Page 60).



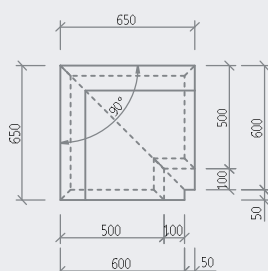
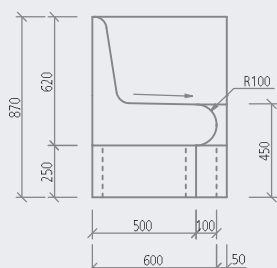
#### Bench corner element:

- Front: approx. 0.90 m²
- Rear panel: approx. 0.90 m²
- Sides: approx. 0.31 m²

#### Carrier corner element:

- Front: approx. 0.10 m²
- Rear panel: approx. 0.40 m²
- Sides: approx. 0.25 m²

#### Technical drawings



## Sanoasa Comoda *linea* | corner element 90°, round, slope to front



### Description

Sanoasa Comoda, bench element 90°, round, slope to front

Sanoasa Comoda *linea*, carrier corner element 90°

Length x width x height

Order no.

850 x 850 x 620 mm

07-64-47/000

850 x 850 x 250 mm

07-64-47/001

- ! • The bench element shall be glued to the carrier element using wedi 610, adhesive sealant (Page 60).

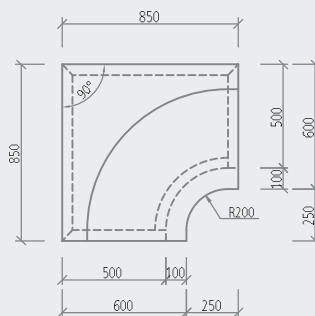
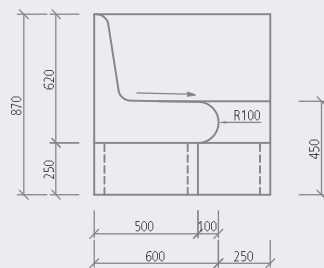
### m² Sanoasa Comodo corner element:

- Front: approx. 1.20 m²
- Rear panel: approx. 1.10 m²
- Sides: approx. 0.31 m²

### Carrier corner element:

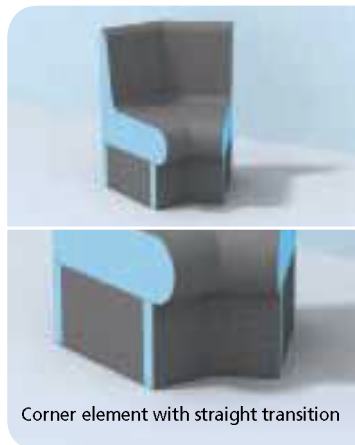
- Front: approx. 0.20 m²
- Rear panel: approx. 0.50 m²
- Sides: approx. 0.25 m²

### Technical drawings



## Sanoasa Comoda wellness benches

### Sanoasa *Comoda linea* | corner element 135°, straight, slope to front



#### Description

Sanoasa Comoda, bench element 135°, straight, slope to front

Sanoasa Comoda *linea*, carrier corner element 135°

Length x width x height

Order no.

600 x 660 x 620 mm

07-64-47/006

660 x 500 x 250 mm

07-64-47/007



- The bench element shall be glued to the carrier element using wedi 610, adhesive sealant (Page 60).



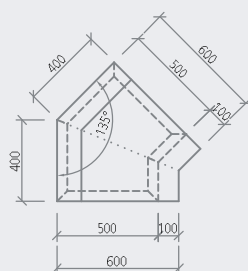
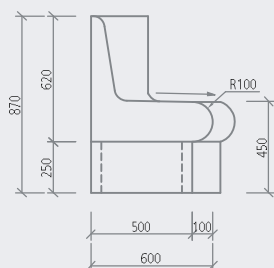
Bench corner element:

- Front: approx. 0.80 m²
- Rear panel: approx. 0.50 m²
- Sides: approx. 0.31 m²

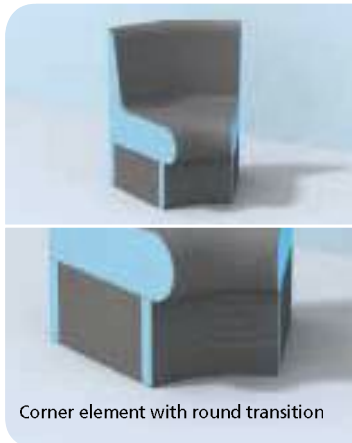
Carrier corner element:

- Front: approx. 0.10 m²
- Rear panel: approx. 0.20 m²
- Sides: approx. 0.25 m²

#### Technical drawings



## Sanoasa Comoda *linea* | corner element 135°, round, slope to front



### Description

Sanoasa Comoda, bench element 135°, round, slope to front

Sanoasa Comoda *linea*, carrier corner element 135°

Length x width x height

Order no.

600 x 660 x 620 mm

07-64-47/002

660 x 500 x 250 mm

07-64-47/003

- ! • The bench element shall be glued to the carrier element using wedi 610, adhesive sealant (Page 60).

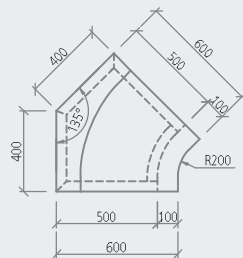
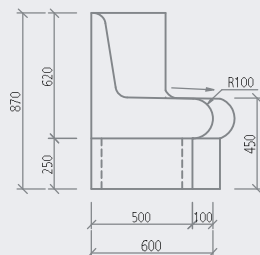
### m² Bench corner element:

- Front: approx. 0.80 m²
- Rear panel: approx. 0.50 m²
- Sides: approx. 0.31 m²

### Carrier corner element:

- Front: approx. 0.10 m²
- Rear panel: approx. 0.20 m²
- Sides: approx. 0.25 m²

### Technical drawings



## Sanoasa Comoda wellness benches

### Sanoasa *Comoda linea* | end element, left, R=200, slope to front



#### Description

Sanoasa Comoda, bench end element left, R=200, slope to front

Sanoasa Comoda *linea*, carrier end element, R=200

Length x width x height

Order no.

600 x 300 x 620 mm

07-64-47/011

500 x 200 x 250 mm

07-64-47/013



- The bench element shall be glued to the carrier element using wedi 610, adhesive sealant (Page 60).



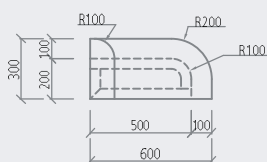
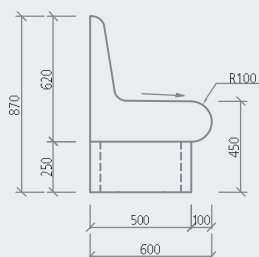
#### Bench end element:

- Front: approx. 0.60 m²
- Rear panel: approx. 0.20 m²
- Sides: approx. 0.31 m²

#### Carrier end element:

- Front: approx. 0.20 m²
- Rear panel: approx. 0.10 m²
- Sides: approx. 0.25 m²

#### Technical drawings



## Sanoasa Comoda *linea* | end element, left, R=600, slope to front



### Description

Sanoasa Comoda, bench end element left, R=600,  
slope to front

Sanoasa Comoda *linea*, carrier end element, R=600

Length x width x height

Order no.

700 x 600 x 620 mm

07-64-47/008

600 x 500 x 250 mm

07-64-47/010

- ! • The bench element shall be glued to the carrier element using wedi 610, adhesive sealant (Page 60).

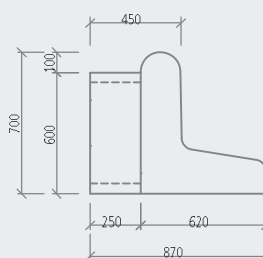
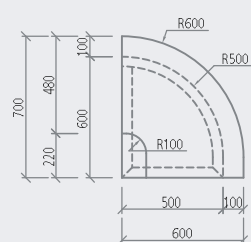
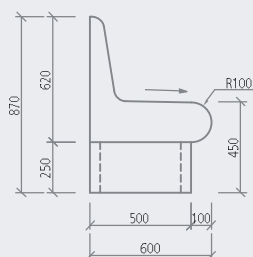
### m<sup>2</sup> Bench end element:

- Front: approx. 0.80 m<sup>2</sup>
- Rear panel: approx. 0.30 m<sup>2</sup>
- Sides: approx. 0.31 m<sup>2</sup>

### Carrier end element:

- Front: approx. 0.30 m<sup>2</sup>
- Rear panel: approx. 0.20 m<sup>2</sup>
- Sides: approx. 0.25 m<sup>2</sup>

### Technical drawings



## Sanoasa Comoda wellness benches

### Sanoasa *Comoda linea* | end element, left, R=200, slope to front



#### Description

Sanoasa Comoda, bench end element left, R=200, slope to front

Sanoasa Comoda *linea*, carrier end element, R=200

#### Length x width x height

#### Order no.

600 x 300 x 620 mm

07-64-47/012

500 x 200 x 250 mm

07-64-47/013



- The bench element shall be glued to the carrier element using wedi 610, adhesive sealant (Page 60).



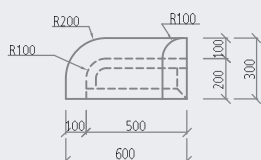
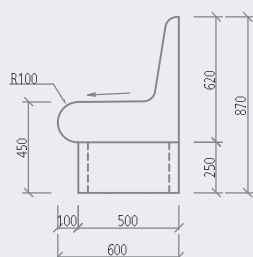
#### Bench end element:

- Front: approx. 0.60 m²
- Rear panel: approx. 0.20 m²
- Sides: approx. 0.31 m²

#### Carrier end element:

- Front: approx. 0.20 m²
- Rear panel: approx. 0.10 m²
- Sides: approx. 0.25 m²

#### Technical drawings





## Sanoasa Comoda *linea* | end element, right, R=600, slope to front



### Description

Sanoasa Comoda, bench end element left, R=600,  
slope to front

Sanoasa Comoda *linea*, carrier end element, R=600

Length x width x height

Order no.

700 x 600 x 620 mm

07-64-47/009

600 x 500 x 250 mm

07-64-47/010

- ! • The bench element shall be glued to the carrier element using wedi 610, adhesive sealant (Page 60).

### m² Bench end element:

- Front: approx. 0.80 m²
- Rear panel: approx. 0.30 m²
- Sides: approx. 0.31 m²

### Carrier end element:

- Front: approx. 0.30 m²
- Rear panel: approx. 0.20 m²
- Sides: approx. 0.25 m²

### Technical drawings

